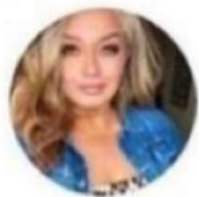




Shivambi Qi Pranic 4h



**KerrBear**

@MPLSKerrBear

The Supreme Court just ruled that Border Patrol can enter any home without a warrant and assault you, within 100 miles of the border. And no, you have zero federal protections if they do so.

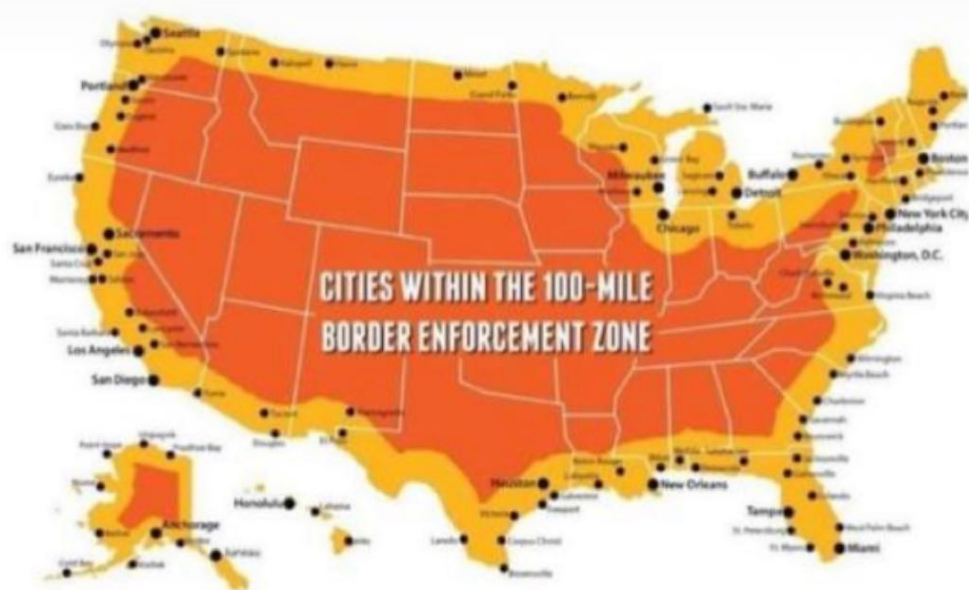
The area in yellow is affected.

@daylaboremnetwork

This why 2nd amendment and correcting your status is so important.



Shivambi Qi Pranic 4h



@daylaboremnetwork

66% of America. Then you count the 100 mile radius of international airport and.. damn near everything is covered

Send message...



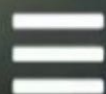
Shanna Clewley 2h



**RON JOHNSON**  
U.S. SENATOR FOR WISCONSIN

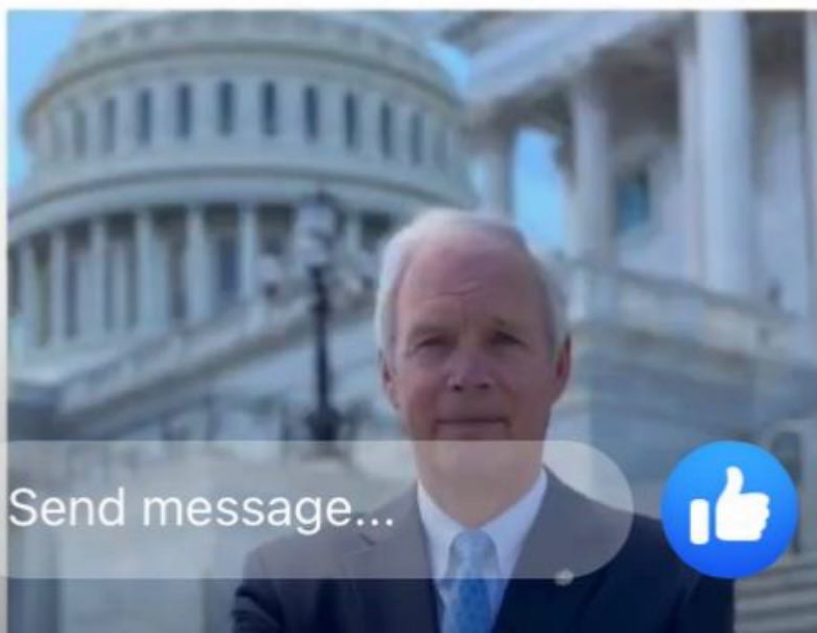
## PRESS RELEASES

[Home](#) / [News](#) / [Press Releases](#)



# Sen. Johnson to Secretary Austin: Has DOD Seen an Increase in Medical Diagnoses Among Military Personnel?

February 3, 2022



Send message...





Shanna Clewley 2h

IF YOU OR YOU  
KNOW ANYONE



← Sen. Johnson to Sec  
[www.ronjohnson.senate.g](http://www.ronjohnson.senate.g)

EFFECTED BY THE

roundtable Renz stated  
diagnoses for neurologic  
times from a five-year av  
863,000 in 2021. There  
registered diagnoses in  
medical conditions:

V, I HAVE PEER

REVIEWED CASE

STUDIES ON

REVERSAL. JUST

ASK.

- Hypertension – 2,181% increase
- Diseases of the nervous system – 1,048% increase
- Malignant neoplasms of esophagus – 894% increase
- Multiple sclerosis – 680% increase
- Malignant neoplasms of digestive organs – 624% increase
- Guillain-Barre syndrome – 551% increase
- Breast cancer – 487% increase
- Demyelinating – 487% increase
- Malignant neoplasms of thyroid and other endocrine glands – 474% increase
- Female infertility – 472% increase
- Pulmonary embolism – 468% increase
- Migraines – 452% increase
- Ovarian dysfunction – 437% increase
- Testicular cancer – 369% increase
- Tachycardia – 302% increase

Send message...

